

Windows Server 2008 and SQL Server 2008 end of support

The challenges, opportunities, and advantages of modernization



End of support for Windows Server and SQL Server is fast approaching

Without security updates and bulletins released by Microsoft, businesses may be exposed to security attacks or compliance risks with industry regulations such as GDPR.



Extended support for SQL Server 2008/2008 R2 ends **July 9, 2019**



Extended support for Windows Server 2008/2008 R2 ends **January 14, 2020**

End of support challenges & opportunities

Optimize costs

At the end of support for Windows Server 2008 and SQL Server 2008, your maintenance costs may increase as your IT staff have to continue managing your aging hardware as well as software.



The average office worker wastes **21 days per year** due to outdated technology¹



41% of business users have critical company data trapped in legacy systems that cannot be accessed by cloud services²



92% of businesses expect cloud to increase revenue over the next two years⁴

Business leaders cite fewer operations resources and hardware/software costs as the **top two cost reduction reasons** for modernization³



Reduce the risk of security breaches

Without regular security bulletins it may be impossible to guarantee protection against hackers and malware or prevent unwanted access to sensitive data.



Cybercrime will cost the world **\$6 trillion annually by 2021**, up from \$3 trillion in 2015⁵



An estimated **111 billion lines** of new software code are produced each year — creating a massive number of vulnerabilities⁵



Only 1% of stolen, lost or compromised records are encrypted⁶

This equates to a **1.5% decline** in encrypted records year over year⁶

Enable digital transformation

Digital transformation has become the industry standard. Without modernizing, businesses may fall behind the competition and fail to provide the latest, most up-to-date customer experience.



60% of businesses see digital transformation as contributing to operational efficiency and streamlining processes⁸

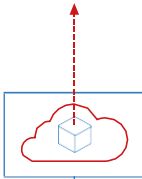
56% of business leaders say their digital improvements have already enhanced profit¹⁰



IT modernization can increase employee motivation by **up to 40%**⁹



In 2007, **only 21% of the world's population** had access to the Internet. Now more than 47% of people, even in remote areas, are online⁷



Data regulations and compliance pressure

By the end of support, your system may fail to comply with GDPR or other regulatory standards. This could lead to many business complications, penalties and fines – and potentially a loss in customer trust.



48% of businesses don't have, or aren't sure if they have data processing agreements set up with new cloud providers – an essential part of GDPR compliance¹¹



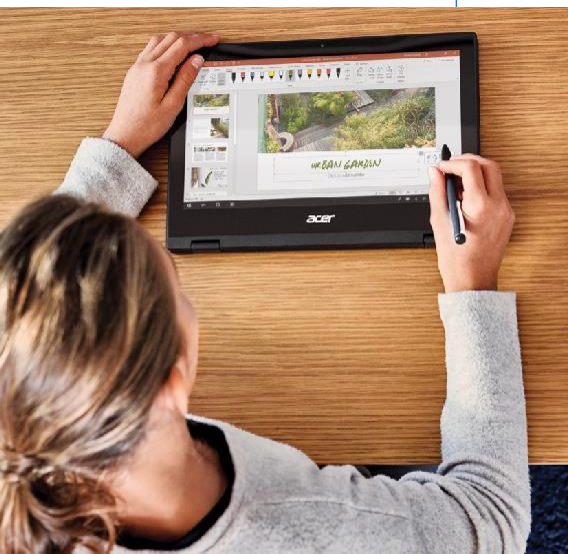
70% are concerned about the damage to brand reputation associated with non-compliance¹²



43% already question whether their organisation has the ability to identify and report a breach within the 72 hour time period¹¹



35% of companies fear that the financial penalties possible under the GDPR could imperil their very existence¹²



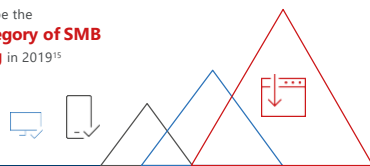
Increase scalability & flexibility

To thrive and stay competitive, your business needs a responsive IT infrastructure to adapt to an ever-changing business environment. If your company is growing or has fluctuating capacity requirements, you need the kind of flexibility that allows you to scale IT resources quickly and cost-effectively.

48% of businesses say new technology will influence growth over the next three years¹³

72% of SMB decision makers say that technology can help them improve the way they run their business¹⁴

Software will be the **largest category of SMB IT spending** in 2019¹⁵



Stay secure and get help with compliance: the benefits of modernization

Avoid business disruptions and see Windows and SQL Server end of support as an opportunity to modernize your application stack and increase consistency across infrastructure, by moving it to the Microsoft cloud:

1



Protect your organisation, secure your infrastructure, and future-proof your technology

2



Upgrade to current versions for the most advanced security, performance, and machine-learning innovations

3



Migrate from SQL Server & Windows Server 2008 to Microsoft Azure for extended support at no cost

Maximise your ROI

By moving to Azure, you can take full advantage of your investment. Built-in technologies enhance performance, and enable end-to-end cloud cost management and optimisation – while reducing total annual costs:



Cloud flexibility

Set up and manage Windows Server and SQL Server deployments in minutes, and then scale up or down on the fly.



Tuned for performance

To meet your toughest demands with virtual machines optimised by the team that build Windows Server and SQL Server.



Hybrid connectivity

Get the most out of your on-premises investments and take advantage of all that Azure offers.



Highly-secured and trusted

Protect your entire data estate with a highly secured database on the most compliant cloud.



Extend your security

Migrating Windows Server and SQL Server workloads to Azure enables businesses to benefit from the \$1B Microsoft investment¹⁶ into building security into a cloud platform you can trust. In addition, migration benefits include:



Operational best practices and a global team of more than **3,500 cybersecurity experts**



Three years of security updates at no charge once migrated to Azure



Built-in security features that encrypt and protect your data



Security health monitored across your entire environment

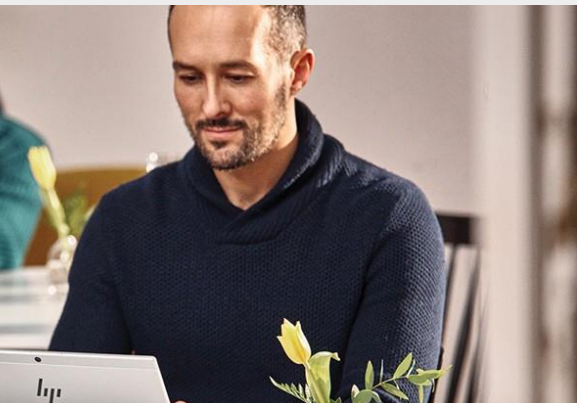


Multiple support offers¹⁷ including 24x7 access to billing support, online self-help, whitepapers, support forums, and documentation

How MBM Ltd can help

Quality, reliable, responsive IT support and services from a team of highly skilled, experienced professionals.

By preparing for Windows and SQL Server end of support today you can start to solve the most pressing migration challenges and deliver the reliability, performance, and security your business stakeholders expect. For more information and an initial assessment, contact us on **01902 324494** or visit <https://www.mbm Ltd.co.uk>.



Sources:

- 1 Statista
- 2 Data Economy
- 3 Deloitte
- 4 Enterprise Online
- 5 Cyber Security Ventures
- 6 ATM Marketplace
- 7 Future of Trade
- 8 Tech Skills
- 9 McKinsey
- 10 Information Project
- 11 Info Security Magazine
- 12 eConsultancy
- 13 Europol
- 14 CMMI GB
- 15 Channel Impact
- 16 Microsoft Azure
- 17 Microsoft Azure support offers